



OVERSIZED CMU

Concrete Masonry Units from Headwaters Concrete Products



Houston's **Market Square Tower** (below) is a 47-story residential high-rise that utilizes various sizes of ground face oversized CMU on the building's exterior.

OVERSIZED MASONRY: MAXIMIZE THE IMPACT OF YOUR NEXT PROJECT.

Oversized concrete masonry units from Headwaters Construction Materials are pre-finished and ready to bring a striking appearance to large scale walls, columns and accent areas. These stately CMUs feature one or more faces that are machine processed to produce three distinct finishes: polished, textured or ground face. Either choice brings out the beautiful, variegated color of the natural aggregates used to manufacture the units.



MARKET SQUARE TOWER, HOUSTON, TX

All of our Oversized concrete masonry units are provided with integral water repellants, and can be manufactured with bullnose, chamfered edges, or vertical scoring while meeting ASTM and LEED standards.



PRODUCT FINISHES

The Headwaters Oversized CMU product line uses superior colored aggregates and a state-of-the-art polishing machine to expose and buff the aggregates of the concrete masonry unit to achieve three distinct product finishes: **Ground, Polished and Textured**.



GROUND



POLISHED



TEXTURED

All units conform to ASTM C 90 or ASTM C 129 and are made of aggregate conforming to ASTM C33 or ASTM C331. All products feature an integral water repellent agent, coloring agents of natural or synthetic oxides that are pure and fade-resistant.

Our oversized concrete masonry units can be manufactured with chamfers, bullnose or scores. See your representative for details.

PROJECT PROFILE

1885 ST. JAMES PLACE, HOUSTON, TX



ST. JAMES PLACE, HOUSTON, TX: Designer: JACKSON & RYAN ARCHITECTS



A new high-end Houston office tower achieves the unique look of cut limestone thanks to innovative oversized concrete masonry units produced by Headwaters Concrete Products.

Jackson & Ryan Architects, Houston, was called upon to design 1885 St. James Place, a luxury office building in Houston's prestigious San Felipe Green development. Nine floors of office space will sit atop six levels of parking, and the upper-level floors will feature exterior balconies and decorative masonry that will complement the sophisticated look of limestone block.

Guy Jackson, Principal of Jackson & Ryan, explored the option of using concrete masonry units on the new luxury building. "The material stacks like masonry," he explained, "but uses bigger pieces." In order to make the building more visually appealing, Jackson and his team came up with the idea of chamfering those bigger pieces. Many of the units had a chamfer added to the block during the manufacturing stage.

"That gave the appearance of traditional, New York/5th Avenue limestone buildings," says Jackson. "We were very pleased with the result that this effect had on the final product."

COLOR SAMPLES

Your Headwaters Architectural Representative can assist you with finish and color selection suitable for your project. Please contact our architectural representatives at hcmproductinfo@headwatersbp.com to order a sample kit.



700 WHITE LIMESTONE



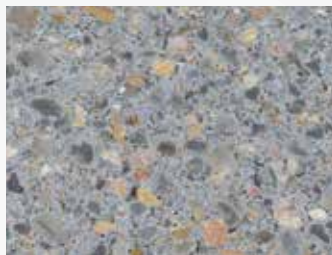
706 ROSE TERRAZZO



713 LIMESTONE BUFF



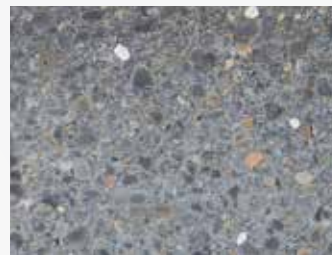
723 TERRA COTTA



725 SMOKE



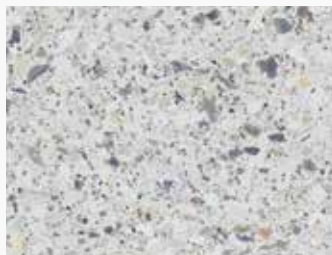
7 BURNT UMBER



8 CHARCOAL



9 CREAM



10 SALT N PEPPER



12 MOJAVE BROWN



437 PECAN



300 ISLAND SAND

Color Information:

Colors depicted in this brochure are for general representation only. See your Headwaters representative for actual color samples. Since our products are made with natural and manufactured aggregates, color variations will be similar to that of natural stone products.

Headwaters Architectural Custom Masonry:

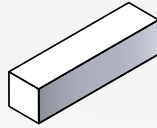
- Complies with hollow load-bearing concrete masonry units specifications ASTM C 90 and non load-bearing concrete masonry units specifications C 129
- Manufactured with aggregates conforming to ASTM C 33 and ASTM C 331 standards
- Includes an integral water repellent agent to reduce water penetration and efflorescence
- Includes coloring agents of natural or synthetic oxides that are pure and fade-resistant

HEADWATERS: REDEFINING CONCRETE MASONRY

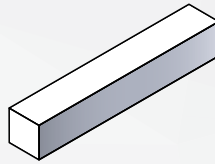


POPULAR UNIT SIZES

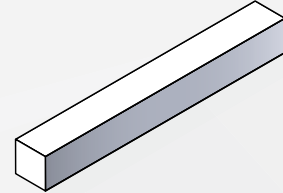
All of the oversized concrete masonry units listed are available in polished, ground and textured finishes.
Additional faces/ends, scored units, bullnose and chamfers are available.



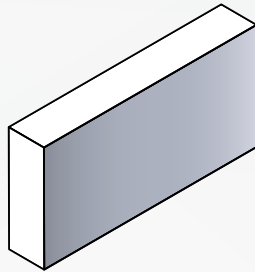
4" X 4" X 16"



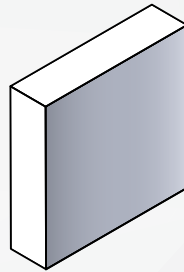
4" X 4" X 24"



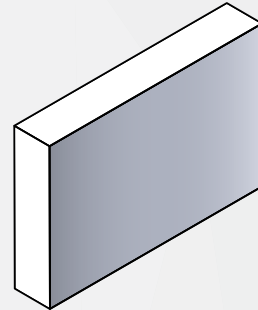
4" X 4" X 32"



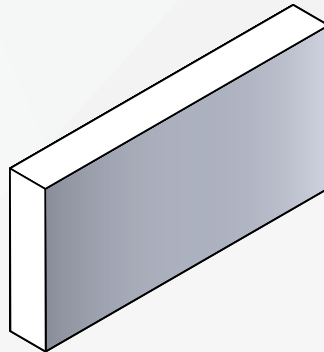
4" X 12" X 24"



4" X 16" X 16"



4" X 16" X 24"



4" X 16" X 32"



ALL UNITS ARE AVAILABLE
IN THE ANGLES INDICATED.
ADDITIONAL SHAPES, ANGLES
AND CHAMFERS AVAILABLE
UPON REQUEST

* NOTE: For Polished & Textured
only, we can make a 45-degree
angle cut, 2" or less.

Oversized CMU Quality Assurance:

- Oversized units meet ASTM C90 specifications, however, they are not designed to be a load-bearing unit. Compiles with ASTM C129.
- Manufactured with aggregate conforming to ASTM C33 and ASTM C331 standards
- Includes an integral water repellent agent to reduce water penetration and efflorescence
- Includes coloring agents of natural or synthetic oxides that are pure and fade-resistant
- Includes a factory-applied sacrificial coating (on Ground units)

www.headwaterscm.com



REDEFINING CONCRETE MASONRY

Headwaters Concrete Products is a major supplier of Concrete Masonry Units (CMU) for Texas and the southern region of the United States. Our extensive experience in the masonry industry ensures both standard and custom architectural units are manufactured to ASTM Standards.

ALLEYTON
DALLAS
PALESTINE
HOUSTON
SAN ANTONIO
AUSTIN
BATON ROUGE

SOUTH TEXAS:

ALLEYTON PLANT & OFFICE

2088 FM 949 - Alleyton, TX 78935
(713) 393.3395 or (888) 464.9341

SAN ANTONIO PLANT & OFFICE

2233 Ackerman Road - San Antonio, TX 78219
(210) 666.4989 or (888) 464.2399

EAST HOUSTON PLANT & OFFICE

10538 Beaumont Hwy - Houston, TX 77078
(713) 672.7531

WESTERN BRICK OFFICE

7620 Washington Avenue - Houston, TX 77007
(713) 861.1751

AUSTIN-MPI

North Austin: 835 Kramer Lane - Austin, TX 78758
(512) 821.3303 or (800) 796.7707

South-Central Austin: 4213 Todd Lane - Austin, TX 78744
(512) 735.1000

NORTH TEXAS:

DALLAS PLANT & OFFICE

2202 Chalk Hill Road - Dallas, TX 75212
(972) 263.5077 or (888) 202.9272

PALESTINE PLANT & OFFICE

2500 West Regan - Palestine, TX 75802
(903) 729.2217 or (800) 594.7967

LOUISIANA:

SOUTHLAND BLOCK (PLANT & SALES)

4747 Choctaw Drive - Baton Rouge, LA
70805 (225) 355.3312